

Why the time is now

Digital transformation is happening all around us, and moving to As-a-Service models is a proven accelerator for innovation. Plus, we all strive to make more sustainable choices, HPE GreenLake contributes to a 30% reduction in energy costs compared to traditional CAPEX purchases. HPE GreenLake delivers the modern cloud experience for all your apps and data, everywhere.

Introducing GreenLake Central

This self-service dashboard allows you to purchase, manage and optimise your apps and data from anywhere – including the ability to see costs, forecasted usage and compliance indicators.



HPE GreenLake in a nutshell

HPE GreenLake brings you the simplicity, agility, and economics of public cloud, with the security, control, and performance benefits of on-premises IT, **on your terms.**

Why HPE GreenLake?

It's time to accelerate your move to hybrid cloud with HPE GreenLake.

Over **90%** customer retention

85% less unplanned downtime

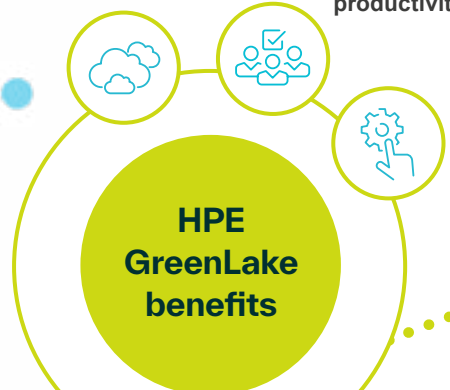
75% less time to deploy digital projects

30-40% CAPEX savings

Get visibility and control across all your clouds

Increase your IT team and business' productivity

Simplify your operations and infrastructure

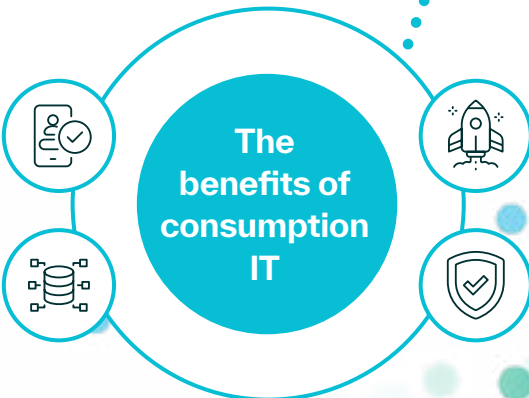


Boost your financial flexibility and get better control over costs

Scale resources up and down as needed

An easy, hands-off method of implementing new tech

Always have the right level server, storage and data space



Accelerate app and service deployment

Gain more control over security and privacy

To find out more, get in touch with your **TD SYNnex Account Manager.**